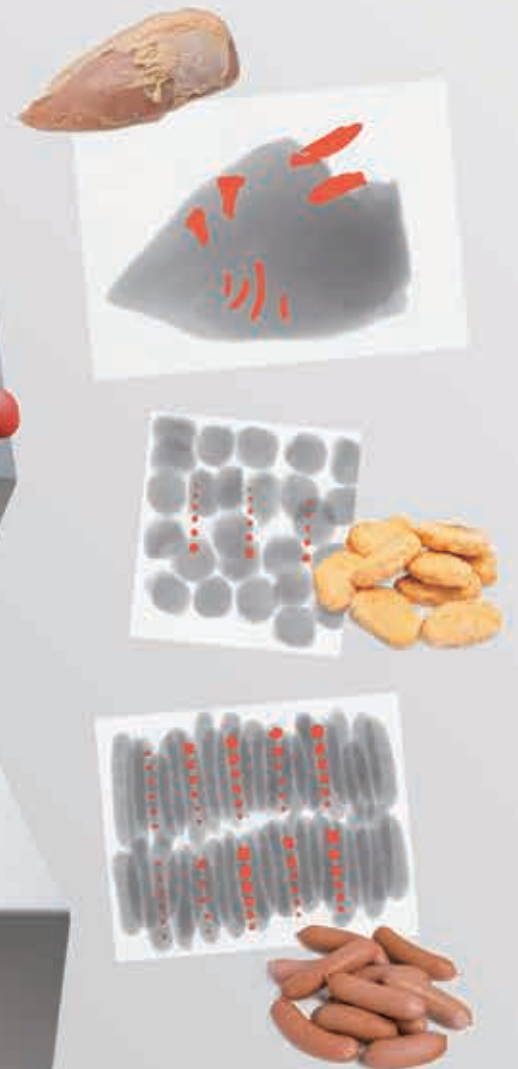


Dual energy sensor technology

# DualX X-ray Inspection System



***XR75***  
**Dual Energy**

Equipped with Newly Developed Dual Energy Sensor

## Minimize false rejects and provide reliable contamination detection of poultry and meat products

Broiler chickens that are selectively bred for rapid growth tend to have relatively less bone mass to the thickness of the meat. With the advanced Dual energy sensor, Anritsu DualX X-ray Inspection System performs reliable and consistent inspection of poultry products.

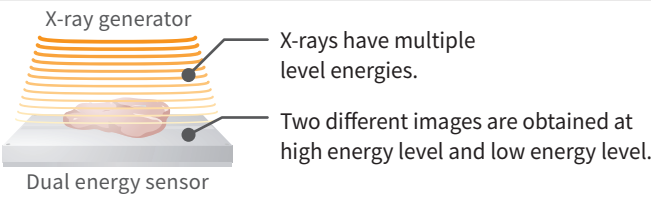
The DualX analyzes two different X-ray energy signals, allowing the system to distinguish between the product being processed and contaminants for a higher detection rate of low-density bones.

### Dual Energy Technology

**Benefits**

1. Provide reliable detection of thin, low density bones.
2. Deliver high detection sensitivity for inspecting overlapping products and rough surface products.
3. Minimize false rejects in bulk flow inspection.

**Mechanism**

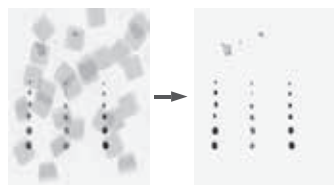


X-ray generator

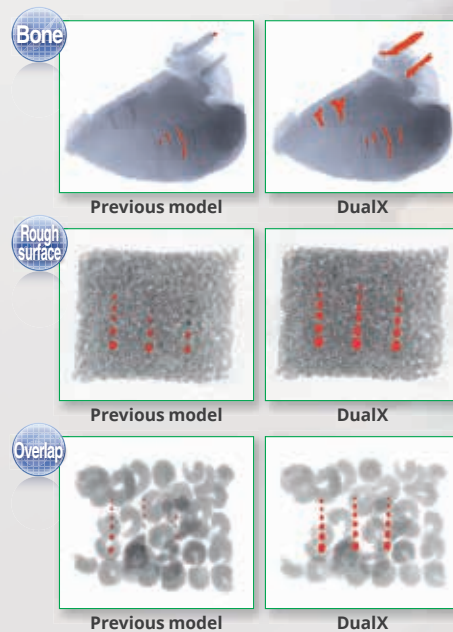
X-rays have multiple level energies.

Dual energy sensor

Two different images are obtained at high energy level and low energy level.



Dual energy subtraction better highlights contaminants.



### The environment-resistant heat control system

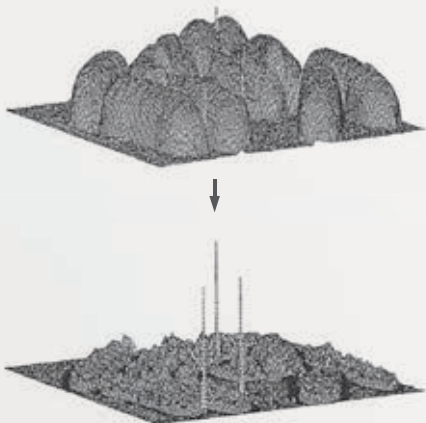
Fully sealed heat control system is designed to withstand challenging production line of unpackaged bulk products, such as meat and sausage. Our unique cooling solution seals and protects the system from outside air exchange, reducing failure rates and minimizing production line downtime.





## Cutting-edge algorithms

With Anritsu signal-processing technology and image-processing algorithms, the DualX delivers outstanding contaminant detection of the low-density types of poultry bones. The advanced DualX technology reduce false rejects and maximize production yield on your production line.



## Thorough quality control and analysis

All the information is easily accessible in one central location with QUICCA3. Each X-ray transmission image during inspection is automatically saved for complete product traceability. The automatic extraction function allows a processor to check X-ray images of products before and after the defective product on the screen, which helps find future problems before they occur.

Automatic extraction and enlarged display of the NG image.

Use the effect value and the NG type to search the information.

# Examples of food applications

## Inspection of bone fragments

Chicken breast

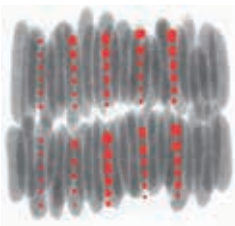


Dark chicken meat

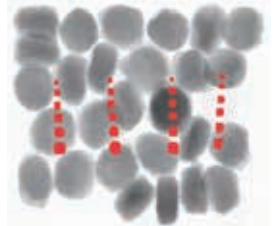


## Contaminant inspection of overlapping products

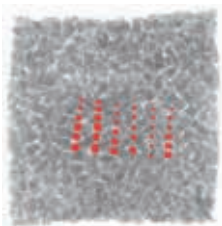
Sausages



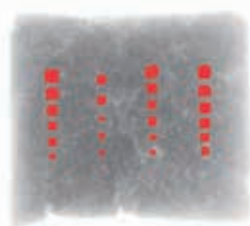
Chicken nuggets



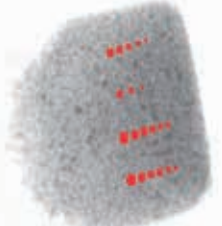
Shredded bacon



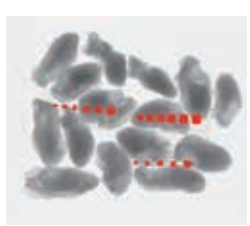
Ground meat



Granola



Oyster



## Safety in design

### XR75 Dual Energy

Anritsu believes customer safety is of utmost importance.

#### Anritsu safety mechanism

##### Emergency stop switch

Cuts power to x-ray and drive circuits, stops the conveyor and x-ray radiation.

##### X-ray ON/OFF key

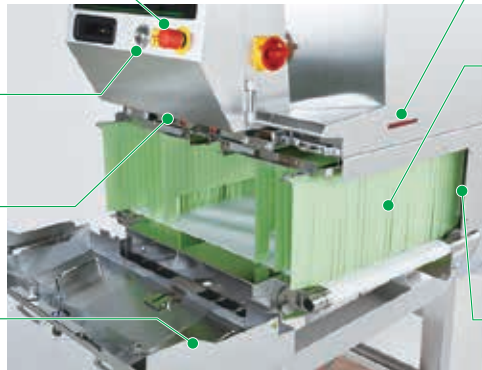
Turning the key to OFF stops x-ray radiation completely.

##### X-ray shield cover open/close sensor

Opening the cover stops x-ray radiation.

##### X-ray shield cover

Opened/Closed using x-ray Irradiation ON/OFF Key.  
Opening the cover stops x-ray radiation due to the x-ray Shield Cover Open/Close Sensor.



##### X-ray irradiation display

The lamp is lit during x-ray radiation.

##### Leakage prevention curtain

Prevents x-ray leakage. For unpackaged or bulk products, the standard lead impregnated curtains are replaced with SUS covers - preventing direct food contact with the curtains.

##### Hand insertion sensor

Interrupting the sensor for a certain period of time stops x-ray radiation.

#### Safety management

X-ray inspection system has been designed to fully satisfy the safe operation. However, to ensure even higher safety, use the safety procedures outlined below.

##### ① Periodic measurement and recording of x-ray leakage data

##### ③ Additional safety measures

Covers may need to be mounted on upstream and downstream conveyors instead of the shield curtains, depending on the shape, weight, and package of products.

##### ② Management of operator working hours

##### ④ No disassembly or modification

NEVER modify or disassemble the main unit, covers, x-ray leakage prevention curtains, safety covers, safety interlocks, etc., otherwise the x-ray leak-proof design may no longer be functional.

#### Safety of inspected products

WHO concluded in 1980 that the "irradiation of any food commodity up to an overall average dose of 10 kGy presents no toxicological hazard and introduces no special nutritional or microbiological problems."

The maximum dose of x-ray irradiation to the products to be inspected by our x-ray inspection systems is 0.002 Gy, which is much lower than the value described above. Even if a product stops inside, the x-ray dose is always kept to 0.1 Gy or less.

Note: Follow the local laws and regulations regarding the installation and use of the x-ray inspection systems.

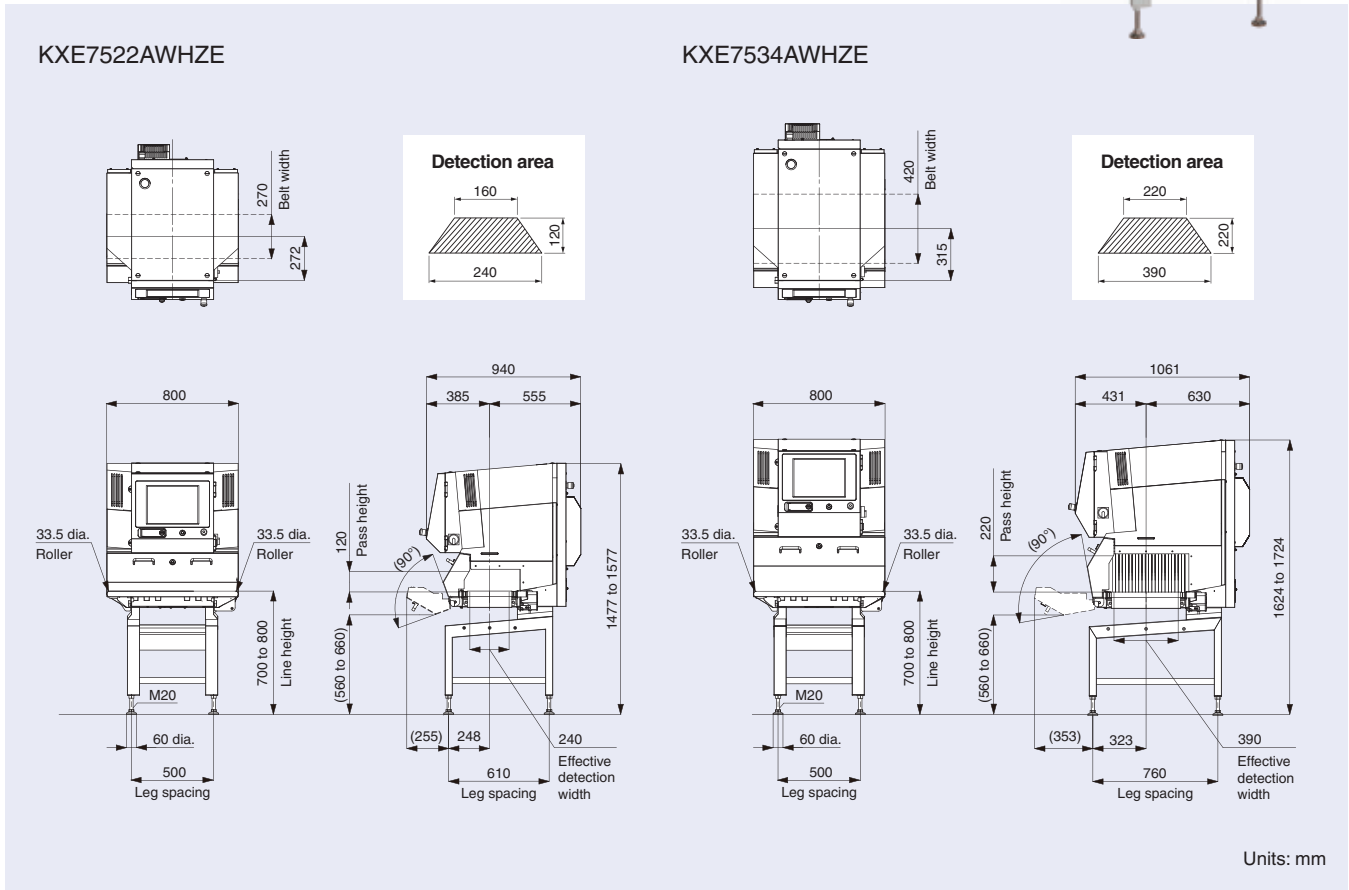
## Major Specifications

### XR75 Dual Energy

### For Packaged Products



#### External Dimensions



#### Specifications



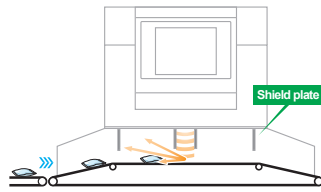
Model	KXE7522AWHZE	KXE7534AWHZE
X-ray output	Tube voltage 30 to 60 kV, tube current 0.4 to 10.0 mA, output 12 to 350 W	Tube voltage 30 to 80 kV, tube current 0.4 to 10.0 mA, output 12 to 350 W
Safety	X-ray leakage maximum 1.0 $\mu$ Sv/h or less, prevention of x-ray leakage by safety devices	
Display	15-inch color TFT LCD	
Operation method	Touch panel (with touch buzzer)	
Detection area <sup>1, 2</sup>	Maximum width 240 mm, maximum height 120 mm	Maximum width 390 mm, maximum height 220 mm
Preset memory	200	
Belt speed <sup>3/</sup>	10 to 60 m/min, maximum 5 kg	
Maximum product weight <sup>4</sup>	10 to 40 m/min, maximum 10 kg (optional)	
Power requirements <sup>5</sup>	200 Vac to 240 Vac, single phase, 50/60 Hz, 2100 VA or less	
Mass <sup>6</sup>	300 kg	350 kg
Environmental conditions <sup>7</sup>	Temperature: 0°C to 30°C, relative humidity: 30% to 85%, non-condensing	
Protection class	Conveyor: IP66, Other parts: IP65	
Exterior	Stainless steel (SUS304)	

1 : The product size should fall below the detection area.  
 2 : The entrance and exit may require covers depending on the length of a product.  
 3 : Variable depending on Product No.  
 4 : Sum total of product weight on the conveyor.  
 5 : Allowable power fluctuation range is  $\pm 10\%$ .  
 6 : Mass without option.  
 7 : The temperature between 0°C and 35°C when an optional rear cooling system is installed.

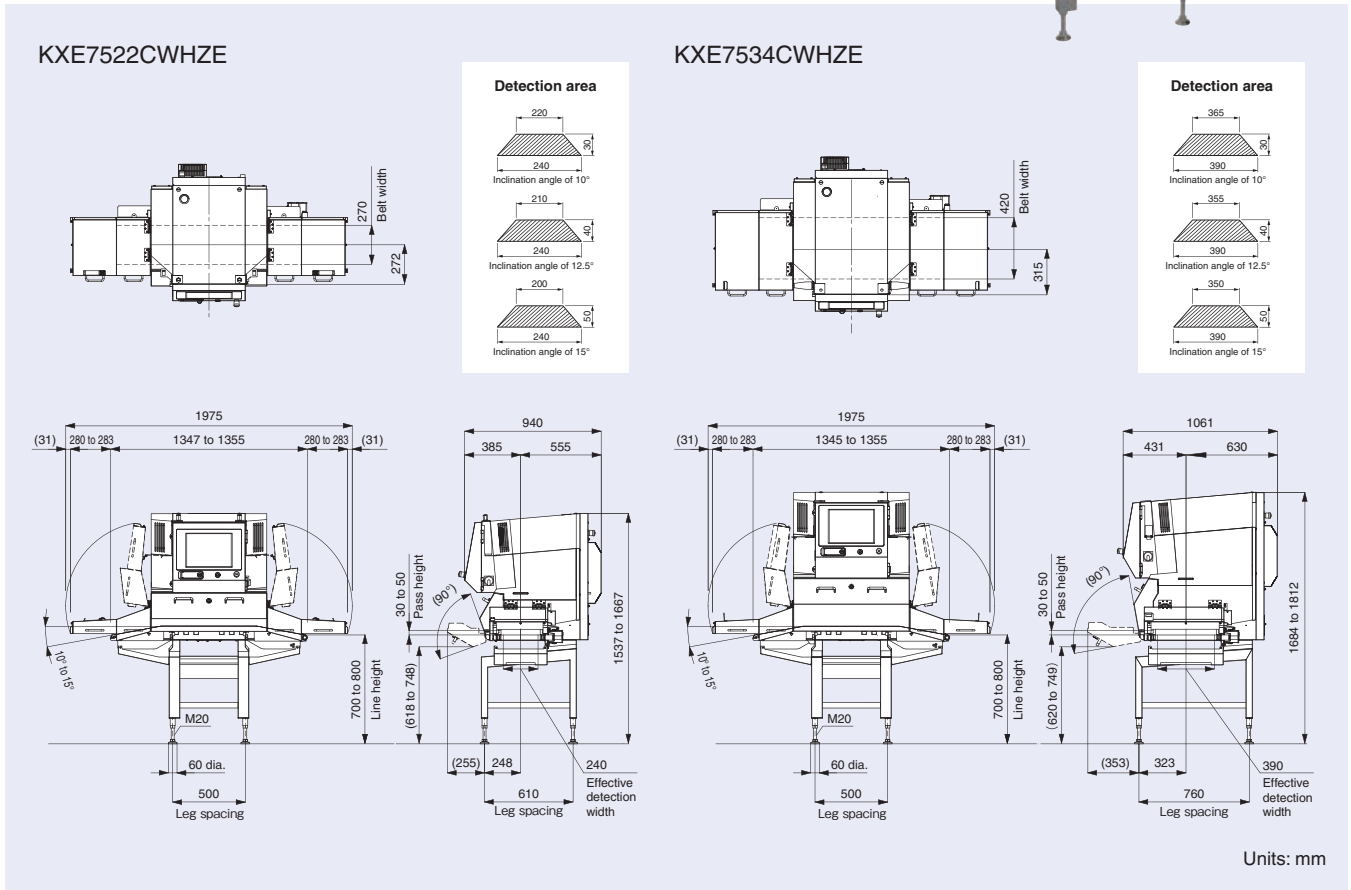
## Major Specifications

### XR75 Dual Energy

For Lightweight Products and Those in Small Bags



#### External Dimensions



#### Specifications



Model	KXE7522CWHZE	KXE7534CWHZE
X-ray output	Tube voltage 30 to 60 kV, tube current 0.4 to 10.0 mA, output 12 to 350 W	
Safety	X-ray leakage maximum 1.0 µSv/h or less, prevention of x-ray leakage by safety devices	
Display	15-inch color TFT LCD	
Operation method	Touch panel (with touch buzzer)	
Detection area <sup>1, 2</sup>	Maximum width 240 mm, maximum height 50 mm	Maximum width 390 mm, maximum height 50 mm
Preset memory	200	
Belt speed <sup>3</sup> / Maximum product weight <sup>4</sup>	10 to 50 m/min, maximum 5 kg	
Power requirements <sup>5</sup>	200 Vac to 240 Vac, single phase, 50/60 Hz, 2100 VA or less	
Mass <sup>6</sup>	335 kg	390 kg
Environmental conditions <sup>7</sup>	Temperature: 0°C to 30°C, relative humidity: 30% to 85%, non-condensing	
Protection class	Conveyor: IP66, Other parts: IP65	
Exterior	Stainless steel (SUS304)	

1 : The product size should fall below the detection area.  
 2 : The entrance and exit may require covers depending on the length of a product.  
 3 : Variable depending on Product No.  
 4 : Sum total of product weight on the conveyor.  
 5 : Allowable power fluctuation range is ±10%.  
 6 : Mass without option.  
 7 : The temperature between 0°C and 35°C when an optional rear cooling system is installed.



---

## ANRITSU INFIVIS CO., LTD.

### International Sales Department

5-1-1 Onna, Atsugi-shi, Kanagawa-Prf., 243-0032, JAPAN  
TEL: +81-46-296-6699 FAX: +81-46-296-6786  
<https://www.anritsu.com/infivis>

### Anritsu Industrial Solutions (Shanghai) Co., Ltd.

3F, No.55, Lane 1505, Zuchongzhi Road, Zhangjiang Hi-tech Park, Pudong New Area, Shanghai 201203, P.R.China  
TEL: +86-21-5046-3066 FAX: +86-21-5046-3068

### ANRITSU INFIVIS (THAILAND) CO., LTD.

700/678 Moo 1, Amata Nakorn Industrial Estate, T. Pangthong A. Pangthong Chonburi Province Thailand 20160  
TEL: +66 38-447180 FAX: +66 38-447182

### ANRITSU INFIVIS LTD.

Unit 3, Scott Road, Luton, LU3 3BF, United Kingdom  
TEL: +44 (0)845 539 9729

### ANRITSU INFIVIS INC.

1001 Cambridge Drive. Elk Grove Village, IL 60007-2453, U.S.A.  
TEL: +1-847-419-9729 FAX: +1-847-537-8266

© ANRITSU INFIVIS CO., LTD. 2018

ISO14001 CERTIFICATE No.JQA-EM0210  
ISO 9001 CERTIFICATE No.JQA-0316

- Some products shown in this catalog may not be available in your country or region. Contact our sales representatives for details.
- To ensure proper operation, read the Operation Manual before using the machine.
- In addition to daily inspection, a full maintenance inspection should be completed annually.

---

Specifications are subject to change without notice.  
No part of this catalog may be reproduced without our permission.